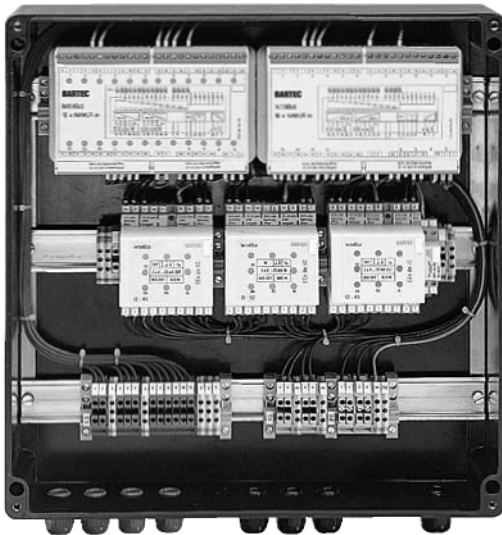


## MODEX – Control units



### Explosion Protection:

#### **Ex Protection Type**

II 2(1)G EEx edqm ia/ib [ia] IIC  
T4...T6 II 2G EEx edqm ia/ib [ib] IIC  
T4...T6

#### **Certification**

PTB 02 ATEX 1159

#### **Nominal Voltage**

up to 690 V

#### **Protection Class**

IP 54 bis IP 65

### **Description**

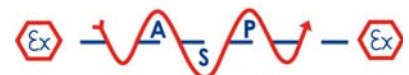
**MODEX - MODular EX**plosions protection - are flameproof encapsulated components that can be installed directly within the Ex area. The modules are used mostly for control in the fields of plant and process engineering and serve as "Interface" between the various sensors and actuators within the Ex area (e. g. proximity switch, transmitter, light barrier, PT 100 temperature detector, valve, acoustic alarm, display etc.) and the process control level within the safe area. (e. g. PC, PLC, loop controller etc.)

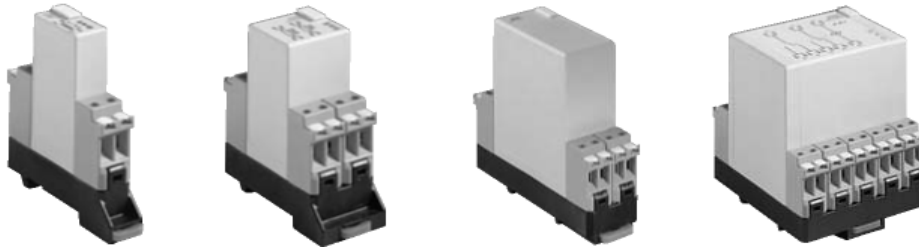
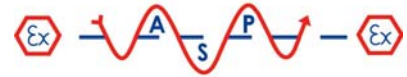
MODEX modules are small, compact, versatile and offer highly innovative control systems. Thanks to their certification they can be intelligent terminal. Mounted in an EEx e distribution box together with terminals, many different controls can be simply provided.

The MODEX product range includes components such as fuses, barriers, measuring transducers for PT 100, isolator amplifiers, various relays, power supplies, bus interface module and many others. The use of bus systems such as CAN, INTERBUS-S, PROFIBUS makes the internetworking of decentralised interfaces a lot easier and, thanks to the reduced wiring works, much more cost effective.

Rail-mounted the controllers become safer and easier to survey.

Mounted in an EEx e terminal enclosure of polyester or high-quality steel, MODEX is supplied as completely preassembled and PTB-certified local control station.





### MODEX individual components

#### Selection chart MODEX control components

- Interference suppression modules
- Fuses
- Switches
- Relay modules
- Contactors
- Optorelays
- Two-position controllers
- Power supplies



#### BUS components for zone 1

- PROFIBUS interfaces
- INTERBUS interfaces

#### BUS components for zone 2

- Field bus systems Ex 750i

## Terminal boxes and accessories

- Polyester enclosure/-distribution box
- Aluminium enclosure/-distribution box
- High-quality stainless steel enclosure/-distribution box



### Supplied by:

**A.S.P. Electro-Technology Ltd**



39 London Road, Hinckley, LE10 1HQ. U.K.  
Tel: +44 (0)1455 635796 Fax: +44 (0)1455 251110  
Email: [sales@asp-electro-tech.com](mailto:sales@asp-electro-tech.com)  
Web: [asp-electro-tech.com](http://asp-electro-tech.com)

This publication is not intended to form the basis of a contract. All the above specifications, dimensions, weights, tolerances etc are typical and may be varied or changed by the manufacturer without prior notice. A.S.P. Electro-Technology accept no liability for