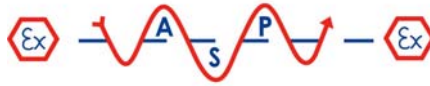
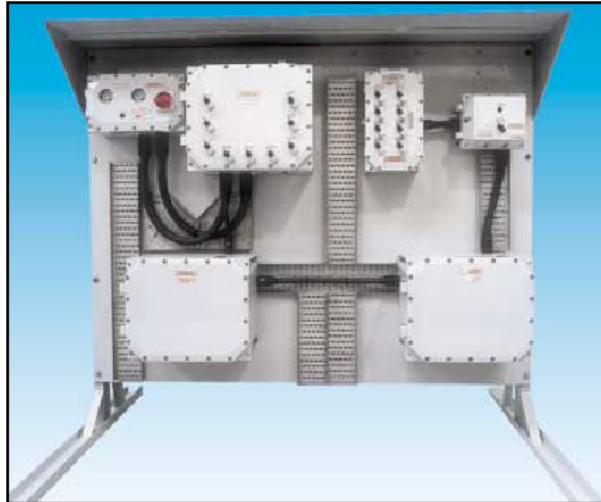


# A.S.P. Electro-Technology Ltd

## INFORMATION SHEET



### DISTRIBUTION PANELS - MCB/ELMCB EExd, Weatherproof.



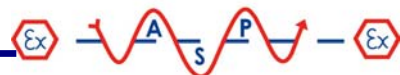
*Custom-built Distribution and Control Panel*

#### Introduction

This range of custom built hazardous area distribution systems is BASEEFA certified and designed for use in flammable atmospheres and harsh environmental conditions.

#### Distribution Panel/Board Applications

- Lighting Distribution.
- Trace Heating.
- General Distribution.
- M.O.V.'s.
- Welding Outlet.
- Motor Control and General Distribution.
- FPSO Turret Lighting and Distribution.
- Zones 1 & 2.
- EExd IIB.
- ATEX approved.
- CENELEC approved.
- BASEEFA certified.
- IP66.
- Cast Iron enclosures.
- Multi-pole MCB's.
- Isolators.
- Fuse switches.
- Incoming MCCB or ELMCCB.
- Outgoing MCB or ELMCB'
- Current rating 315 amp.
- Motor starters.
- Status and warning lamps.
- Meters.
- Fuses.
- Transformers up to 8KVA.
- Selector switches & pushbuttons.
- Hinge cover.
- Wall or frame mounted.



Supplied by: A.S.P. Electro-Technology Ltd  
Tel: +44 (0)1455 635796 Fax: +44 (0)1455 251110  
Email: [sales@asp-electro-tech.com](mailto:sales@asp-electro-tech.com) [www.asp-electro-tech.com](http://www.asp-electro-tech.com)

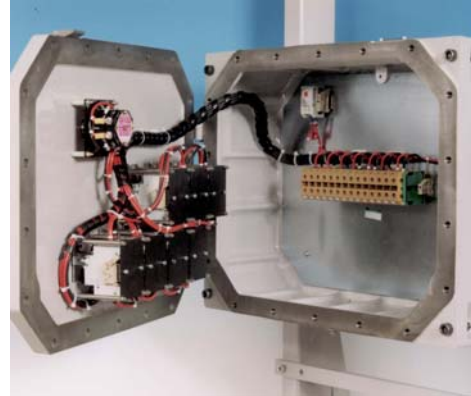
## Multiway MCB/ELMCB Distribution Panel

### Application

Custom built to suit clients' requirements available, with or without incoming isolator unit.

### Features

- Hinged cover on all enclosures.
- Option of door interlock when incoming isolator fitted.
- All external handles are padlockable in "Off" position.
- 4 enclosure options available, which will offer a maximum of 20 TP or 20 DP ELMCB units mounted inside one enclosure.
- Fuse switch option is also available upon request.
- MCB current rating up to 63 amp, 10KA.
- ELMCB current rating up to 40 amp, 10KA.
- External test facility for ELMCB available upon request.
- MCB/ELMCB operating handle provides indication of trip condition and resets the breaker.
- Visual LED trip indication is available upon request.
- For specific applications additional components can be fitted into the Multiway MCB distribution panel.
- Pole configuration SP/N, DP, TP & TP/N.
- SP/N versions the neutral can be arranged for early make/late break.
- Standard cable entries in the bottom of the enclosure, but cable entries can be accommodated on all four enclosure walls.
- Multiway enclosures can be coupled together to form large Switchrack Type Distribution and Switchboards.



## Incoming or Outgoing Unit

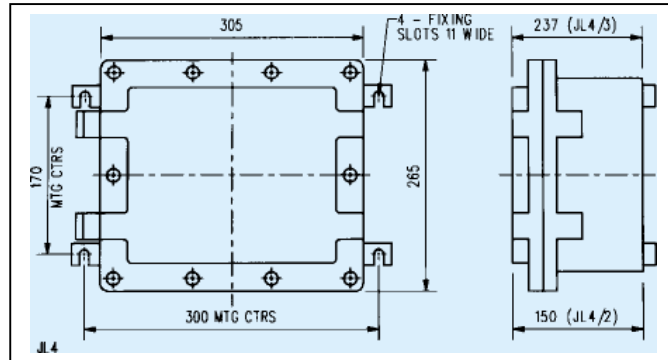
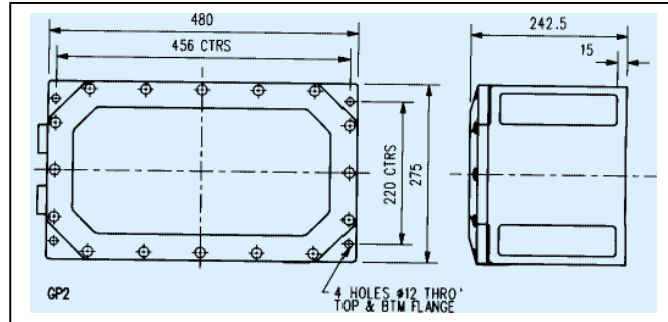
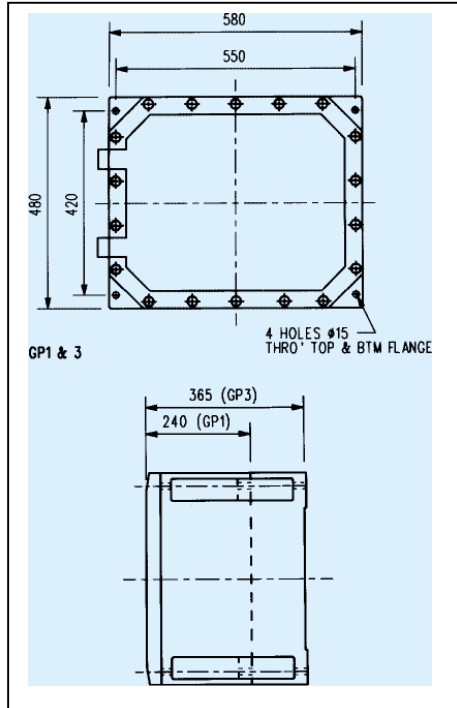
### Application

Custom built to suit clients' requirements, available in the form of Isolator, Fuse Switch, MCCB and ELMCCB and rated up to 315 amp at 600 volts a.c.

### Features

- Hinged cover on all enclosures.
- Door interlocked and padlockable handles in "Off" position.
- Current rating from 32 to 315 amp.
- Pole configuration SP/N, DP, TP & TPSW/N, SW/N versions.
- Standard cable entry, incoming bottom and outgoing top.
- Isolators will be load making/fault breaking.
- MCCB rated up to 85KA.
- Shunt trip or no volt facility available on MCCB unit.
- ELMCCB units are available with earth fault sensitivity, external test and reset facility.
- Visual LED trip indication is available upon request.





## General

### Specification

Certification:	EExd IIB T4/6 CENELEC EN50014 & 18. ATEX approved. Zones 1 & 2.
Material:	SG iron.
Finish:	Corrosion resistant epoxy paint (other finishes are available upon request).
Weight: (approx.)	GP3: GP1: GP2: JL4/3: JL4/2: 182kg 149kg 70kg 55kg 42kg
Operating Temperature:	GP1 & 3 = -40°C to +40°C/55°C. GP2 = -40°C to +40°C/55°C. JL4 = -55°C to +40°C/55°C.
IP Rating:	Designed in accordance with IP66.
Duty/Tag Labels:	Can be fitted to client's requirements and supplied in stainless steel.
Earthing:	Internal and external earth connections fitted, stud size M6 screw.
Cable Entries:	Metric ISO thread form up to 75mm (plugs can be fitted if specified).



*Multiway MCB Distribution Panel with Incoming Isolator Switch.*

### Supplied by:

**A.S.P. Electro-Technology Ltd**  
Specialist Suppliers of Hazardous Area Certified  
Electrical Products & Instrumentation

39 London Road, Hinckley, LE10 1HQ. U.K.  
Tel: +44 (0)1455 635796 Fax: +44 (0)1455 251110  
Email: [sales@asp-electro-tech.com](mailto:sales@asp-electro-tech.com) Web: [asp-electro-tech.com](http://asp-electro-tech.com)



This publication is not intended to form the basis of a contract. All the above specifications, dimensions, weights, tolerances etc are typical and may be varied or changed by the manufacturer without prior notice. A.S.P. Electro-Technology accept no liability for consequence of use.