

**A.S.P. Electro-Technology Ltd**  
**INFORMATION SHEET**

**TITAN TYPE LF34 & LF35 EExd / I.S. LEVEL SWITCH**

- BASEEFA EExd certified, Zones 1 & 2, Groups IIB + H2 T6. Ta -20 to +55degC
- ATEX Certified Ex II 2GD, EExd IIB + H2 T6 CAT 2 Ta -55 to +75degC
- Intrinsically Safe Certified EExia IIC T4, T5 & T6
- Stainless Steel or black anodised aluminium IP66 rated enclosure
- Suitable for horizontal or vertical mounting applications



**Type LF34 Horizontal Level Switch:**

Switching is effected in this unit through transforming by means of an eccentric cam at fulcrum, the vertical motion of the float with level change to the considerably reduced movement of a horizontal switch plunger which is arranged to operate a SPDT/SPCO microswitch. Isolation of the switch mechanism from the liquid monitored is effectively maintained by the use of an "O" Ring seal on the horizontal switch plunger.

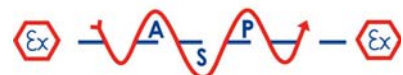
This type of level switch can therefore be used on tanks under pressure or vacuum, being suitable for pressures up to 3.5 Bar and liquid temperatures up to 100°C.

The device can be mounted through a 27mm hole drilled in the side of tank with joint washer and back nut provided. Alternatively it can be fitted in a suitable tank cover plate of sufficient dimension to allow insertion of the switch complete with float

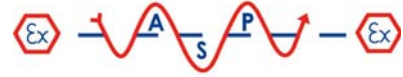
**Type LF35 Vertical Level Switch**

This design is suitable for mounting through a tank top or cover and utilises a free float principle. The float is allowed to travel unrestricted up or down the rod in response to level change between the limits set by the upper and lower adjustable rod collars which are fixed in position at reselected points.

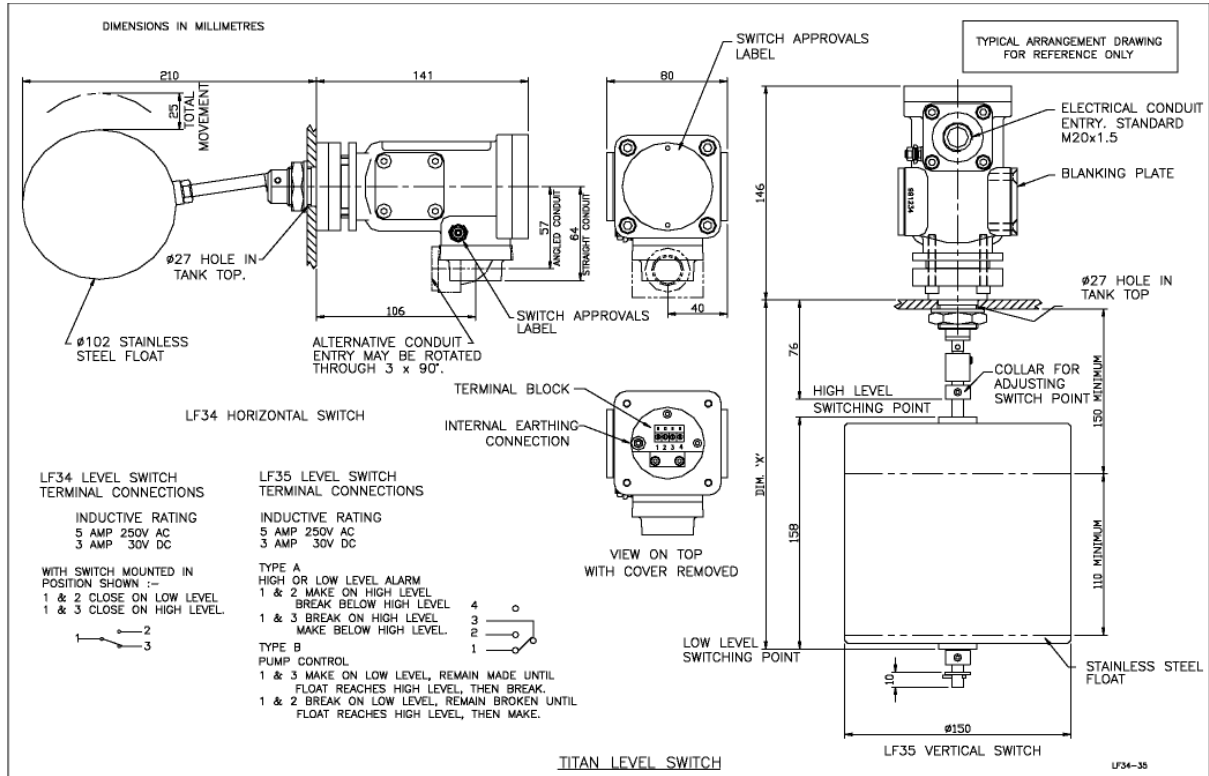
Both types LF35A suitable for high or low alarms and type LF35B complete with a latching mechanism suitable for pump control can be installed in non-pressurised tanks and sumps with liquid temperatures up to 100°C. They can be fitted with a cover plate or flange to ease installation. The float rod can be supplied between 500mm and 2000mm to suit application, the required length must be stated upon ordering. Each float switch is tested and adjusted individually to suit float/float rod fitted







**Drawings:**



**Supplied by:**

**A.S.P. Electro-Technology Ltd**  
Specialist Suppliers of Hazardous Area Certified  
Electrical Products & Instrumentation

39 London Road, Hinckley, LE10 1HQ. U.K.  
Tel: +44 (0)1455 635796 Fax: +44 (0)1455 251110  
Email: [sales@asp-electro-tech.com](mailto:sales@asp-electro-tech.com) Web: [asp-electro-tech.com](http://asp-electro-tech.com)



This publication is not intended to form the basis of a contract. All the above specifications, dimensions, weights, tolerances etc are typical and may be varied or changed by the manufacturer without prior notice. A.S.P. Electro-Technology accept no liability for consequence of use.