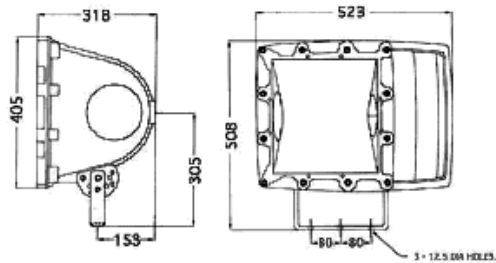
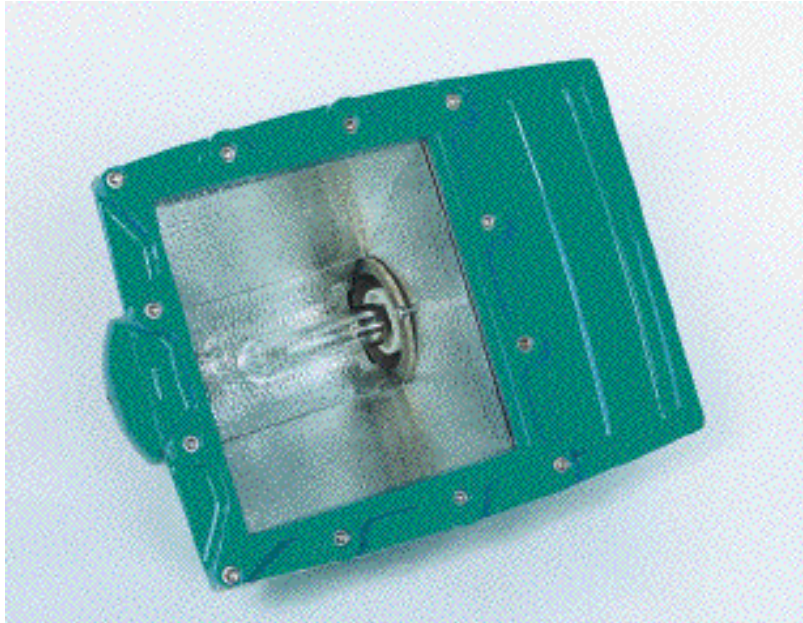
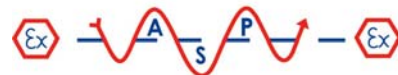


8 Series EEx de Flexible Floodlight



Features

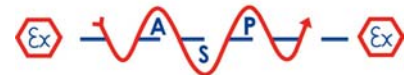
- ✧ Innovative design for easy relamping
- ✧ Unique wide angle/narrow angle method of adjustment
- ✧ 110v and 440v versions
- ✧ New ATEX certified range
- ✧ Superb area lighting - 210 candelas per 1000 lumens over an 80 degree angle



Certification Code:	EEx de IIB T2 and T3 (dependent on lamp source- see data)
Certification Standard:	EN50014-018-019
Certificate Number:	SIRA 00 ATEX 1035
Degree of Protection:	IP 66 to IEC 529

Technical Data

Supply voltage	<ul style="list-style-type: none"> Standard product 240v, 50 Hz, 110v 50Hz. Other voltages and frequencies on request.
Control gear	<ul style="list-style-type: none"> Integral within the luminaire. Power factor correction as standard.
Lamp source options	<ul style="list-style-type: none"> Certified with tubular or elliptical lamps (lamps not included). 70w SON-T T3 @ Ta = 55°C 80w, 125w HPMV T3 @ Ta = 55°C With ES (E27) lampholder. 150w, 250w, 400w SON T3 @ Ta = 55°C 250w, 400w MBI T3 @ Ta = 55°C 500w, 750w Tungsten Halogen T3 @ Ta = 55°C 250w, 400w HPMV T3 @ Ta = 55°C All with GES (E40) lampholders. 1000w Tungsten Halogen T2 @ Ta = 40°C 150w MBI T3 @ Ta = 55°C With double ended lamp holders.
Mounting Facilities	<ul style="list-style-type: none"> Graduated angle bracket as standard. Other options available at extra cost. Facility for fitting pole mounting clamps as standard.
Cable entries	2 x M 20 - ISO (1 plugged) as standard. Other thread forms available.
Terminals	2 wire and Earth with looping facility. Cable size 6 mm ² max.
Relamping	Rotate the cover to the left of the fitting by hand to access the lamp.
Light output adjustment	Rotate the ignitor housing 180° as described on the installation leaflet.
Mounting Adjustment	Graduated angle plate to stirrup.
Reflector	Internal polished aluminium.
Operating temperature	-20°C to +55°C as standard except 1000w tungsten (40°C).
Access for connections	Removable EEx e terminal cover with 4 stainless steel screws.



Supplied by: A.S.P. Electro-Technology Ltd
 Tel: +44 (0)1455 635796 Fax: +44 (0)1455 251110
 Email: sales@asp-electro-tech.com www.asp-electro-tech.com

8 Series Floodlight
 Page 2 of 3

- Finish
- 2 pack aqua epoxy paint on pre-treated & primed surface.
 - Alternative finishes available.

Material Corrosion resistant light alloy grade LM 25

Anti-glare deflector Several options available at extra cost.

Weight	240v	400w SON & MBI	32kg
		400w HPMV	32kg
		1000w Tungsten Halogen	28kg
	110/415v	400w SON/MBI	36kg
		400w HPMV	36kg
		1000w Halogen	32kg

How To Order

Product codes are formed as follows:

Series Ref.	Lamp Size & Type	Voltage	Frequency
8	e.g. 400w SON-T	e.g. 240	e.g. 50
and written: 8 / 400w SON-T / 240 / 50			

Special features

specified using the following codes:

- /GB Graduated angle bracket
- /PM Pole/ pipe mounted (diameter required)
- /WM Wall mounted
- /MH Multiple head frame
- /WG Wire guard
- /L Louvred
- /BF Baffles
- /BD Barn doors
- /SS Spill shield
- /D Deflector

These are added to the product codes as required: e.g. 8 / 400w SON-T / 240 / 50 / WM / P40mm

Supplied by:

A.S.P. Electro-Technology Ltd



39 London Road, Hinckley, LE10 1HQ. U.K.
 Tel: +44 (0)1455 635796 Fax: +44 (0)1455 251110
 Email: sales@asp-electro-tech.com
 Web: asp-electro-tech.com

This publication is not intended to form the basis of a contract. All the above specifications, dimensions, weights, tolerances etc are typical and may be varied or changed by the manufacturer without prior notice. A.S.P. Electro-Technology accept no liability for consequence of use.