

SOUNDERS – Up to 118 dB(A) - DB3 Range EExd(e), Weatherproof



Sounder/Beacon
Combination Unit



ATEX certified
for gas & dust
atmospheres

Introduction

This range of light weight all GRP, flameproof sounders is intended for use in potentially explosive gas and dust atmospheres and has been designed with high ingress protection to cope with the harsh environmental conditions found offshore and onshore in the oil, gas and petrochemical industries.

The flamepaths, flare and the body, are manufactured completely from a UV stable glass reinforced polyester. Stainless steel screws and sinter are incorporated thus ensuring a corrosion free product. A tapered flamepath is used to overcome the problems of assembly of parallel spigot flamepaths.

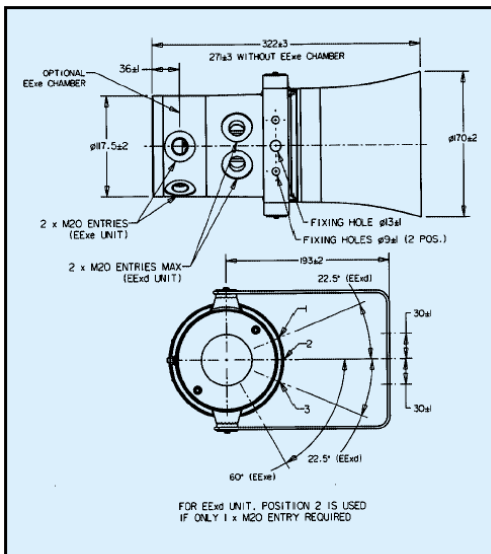
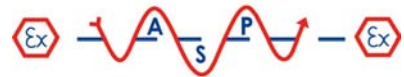
An optional Exe terminal chamber is available.

An uncertified version is available for use in non-explosive atmospheres.

- Zone 1, Zone 2 and non-Ex use.
- EExde IIC T5.
- ATEX approved, Ex II 2GD.
- Optional Exe terminal chamber.
- CENELEC approved.
- BASEEFA certified.
- UL Listed for USA and Canada
 - Hazardous locations:
Class I, Div 2, Groups A-D.
 - Ordinary locations: Audible-Signal Device.
- GOST 'R' certified.
- Australian (SAA) certified.
- IP66 and IP67.
- *Certified temperature -55°C to $+70^{\circ}\text{C}$.
- All GRP corrosion free flamepaths.
- Up to 118dBA output.
- Integral volume control.
- 27 tones, user selectable.
- Tones comply with UK00A/PFEER guidelines.
- Any two tones may be switched via the external voltage supply.
- Tones may be programmed to customer specification.
- d.c. version accepts any voltage between 12V and 48V d.c.
- End of line resistor option.
- Sounder/Beacon Combination Unit available.

*Depending on version.





Terminals:	4 x 2.5mm ² (a.c.), 6 x 2.5mm ² (d.c.).
Earth Continuity:	Included on EExde version.
Mounting:	Stainless steel bracket with ratchet facility.
Labels:	Duty and tag labels optional.
Cable Entries:	Up to 2 x 20mm EExd. 2 x 20mm EExe. Up to 2 x 1/2" NPT UL.
Tone Selection:	27 user selectable tones.
Sounder/Beacon Unit:	The DB3 may be combined with an MEDC beacon to create a combined audio/visual alarm. Contact MEDC for price and specification
Two Stage Unit DB3P:	Switchable between any two tones by either: (i) Reversing the polarity of the supply, or (ii) by a 3 wire common +ve system, switching between the two -ve lines. Note: Two stage unit available in <u>d.c.</u> versions only.

Ordering Requirements:

The following code is designed to help in selection of the correct unit. Build up the reference number by inserting the code to each component into the appropriate box.

Specification

Certification: CENELEC EN50014, 18, 19.
BASEEFA Cert. No. BAS00ATEX2097X, EExd IIC.
BASEEFA Cert. No. BAS00ATEX2098X, EExde IIC.
Zones 1 and 2.
UL Listed for USA and Canada
– Hazardous locations:
Class I Div 2, Groups A-D.
Class I Zones 1 & 2, AExd IIC T4.
Listing No: E203310.
– Ordinary locations: Audible-Signal Device.
UL – Listing No. S8116.
Refer to UL data sheet at rear of catalogue for complete information.
GOST 'R' Certification: 1 Exd IIC T4 & 1 Exde IIC T4.
Cert. No. A-0759.

Material: Body & horn in anti-static, UV stable, glass reinforced polyester. Swivel bracket & captive cover screws in stainless steel.

Finish: Body and horn, natural black or epoxy paint coated to client's colour requirements.

Sound Output: 115dB(A) ± 3dB(A) (tone dependent).

Volume Control:	*Nominal Output (dBA)	Input Current (mA)
	93	50
	105	100
	108	150
	111	200
	112	250
	114	300
	115	350

*Output measured with 24V input voltage. Tone set to 970Hz continuous.

Weight: 6.0kg approx. dependent on model (+0.5kg for EExe).

Certified Temperature:	EExd	EExde	UL	GOST Exd	GOST Exde
DB3 & DB3P	-20°C to +70°C	-20°C to +45°C	-55°C to +70°C	-20°C to +50°C	-20°C to +40°C
DB3L & DB3LP	-55°C to +55°C	-55°C to +55°C	n/a	-55°C to +55°C	-55°C to +55°C

Ingress Protection: IP66 and IP67.

Fire Retardancy: GRP is fire retardant to ISO 1210.

Voltage: Up to 48V d.c. Up to 254V a.c.

Current Consumption:	V	I
	12V d.c.	760mA
	24V d.c.	380mA
	48V d.c.	190mA
	110V a.c.	135mA
	120V a.c.	124mA
	220V a.c.	68mA
	240V a.c.	62mA
	254V a.c.	59mA

Unit Type	Certification	Voltage	Labels	Entries	Options	Colour																																																															
<table border="1"> <thead> <tr> <th>Type</th> <th>Details</th> </tr> </thead> <tbody> <tr><td>DB3</td><td>Standard unit</td></tr> <tr><td>DB3P</td><td>Two stage (d.c. only)</td></tr> <tr><td>*DB3L</td><td>Low temp. standard unit</td></tr> <tr><td>*DB3LP</td><td>Low temp. two stage (d.c. only)</td></tr> </tbody> </table> <p>*Available unpainted only.</p>	Type	Details	DB3	Standard unit	DB3P	Two stage (d.c. only)	*DB3L	Low temp. standard unit	*DB3LP	Low temp. two stage (d.c. only)	<table border="1"> <thead> <tr> <th>Type</th> <th>Code</th> </tr> </thead> <tbody> <tr><td>Uncertified</td><td>W</td></tr> <tr><td>EExd</td><td>D</td></tr> <tr><td>EExde</td><td>E</td></tr> <tr><td>UL Listed</td><td>UL</td></tr> <tr><td>UL (Ordinary Locations)</td><td>ULW</td></tr> <tr><td>GOST 'R' Exd</td><td>DG</td></tr> <tr><td>GOST 'R' Exde</td><td>EG</td></tr> </tbody> </table>	Type	Code	Uncertified	W	EExd	D	EExde	E	UL Listed	UL	UL (Ordinary Locations)	ULW	GOST 'R' Exd	DG	GOST 'R' Exde	EG	<table border="1"> <thead> <tr> <th>Voltage</th> <th>Code</th> </tr> </thead> <tbody> <tr><td>12V - 48V d.c.</td><td>048</td></tr> <tr><td>*110V a.c.</td><td>110</td></tr> <tr><td>*120V a.c.</td><td>120</td></tr> <tr><td>*220V a.c.</td><td>220</td></tr> <tr><td>*240V a.c.</td><td>240</td></tr> <tr><td>*254V a.c.</td><td>254</td></tr> </tbody> </table> <p>*DB3P not available in a.c. version.</p>	Voltage	Code	12V - 48V d.c.	048	*110V a.c.	110	*120V a.c.	120	*220V a.c.	220	*240V a.c.	240	*254V a.c.	254	<table border="1"> <thead> <tr> <th>Label</th> <th>Code</th> </tr> </thead> <tbody> <tr><td>Duty</td><td>D*</td></tr> <tr><td>Tag</td><td>T*</td></tr> <tr><td>None</td><td>N</td></tr> </tbody> </table> <p>*Please specify wording</p>	Label	Code	Duty	D*	Tag	T*	None	N	<table border="1"> <thead> <tr> <th>Features</th> <th>Code</th> </tr> </thead> <tbody> <tr><td>None</td><td>N</td></tr> <tr><td>End of line resistor</td><td>E*</td></tr> <tr><td>Special tone</td><td>S</td></tr> </tbody> </table> <p>*State value.</p>	Features	Code	None	N	End of line resistor	E*	Special tone	S	<table border="1"> <thead> <tr> <th>Colour</th> <th>Code</th> </tr> </thead> <tbody> <tr><td>Natural Black</td><td>N</td></tr> <tr><td>Red</td><td>R</td></tr> <tr><td>Special</td><td>S*</td></tr> </tbody> </table> <p>*Please specify</p>	Colour	Code	Natural Black	N	Red	R	Special	S*
Type	Details																																																																				
DB3	Standard unit																																																																				
DB3P	Two stage (d.c. only)																																																																				
*DB3L	Low temp. standard unit																																																																				
*DB3LP	Low temp. two stage (d.c. only)																																																																				
Type	Code																																																																				
Uncertified	W																																																																				
EExd	D																																																																				
EExde	E																																																																				
UL Listed	UL																																																																				
UL (Ordinary Locations)	ULW																																																																				
GOST 'R' Exd	DG																																																																				
GOST 'R' Exde	EG																																																																				
Voltage	Code																																																																				
12V - 48V d.c.	048																																																																				
*110V a.c.	110																																																																				
*120V a.c.	120																																																																				
*220V a.c.	220																																																																				
*240V a.c.	240																																																																				
*254V a.c.	254																																																																				
Label	Code																																																																				
Duty	D*																																																																				
Tag	T*																																																																				
None	N																																																																				
Features	Code																																																																				
None	N																																																																				
End of line resistor	E*																																																																				
Special tone	S																																																																				
Colour	Code																																																																				
Natural Black	N																																																																				
Red	R																																																																				
Special	S*																																																																				

Supplied by:

A.S.P. Electro-Technology Ltd
Specialist Suppliers of Hazardous Area Certified
Electrical Products & Instrumentation

39 London Road, Hinckley, LE10 1HQ. U.K.
Tel: +44 (0)1455 635796 Fax: +44 (0)1455 251110
Email: sales@asp-electro-tech.com Web: asp-electro-tech.com



This publication is not intended to form the basis of a contract. All the above specifications, dimensions, weights, tolerances etc are typical and may be varied or changed by the manufacturer without prior notice. A.S.P. Electro-Technology accept no liability for consequence of use.