

## STATUS LAMP - SL5 Range

### EExe(m), Weatherproof.

### Introduction

Manufactured in GRP, with a high ingress protection and high light output, these status lamps have been designed for use in potentially explosive atmospheres and harsh environmental conditions such as those found offshore and onshore in the petrochemical industries.

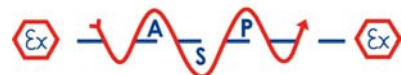
A long life, high intensity, LED version is now available.

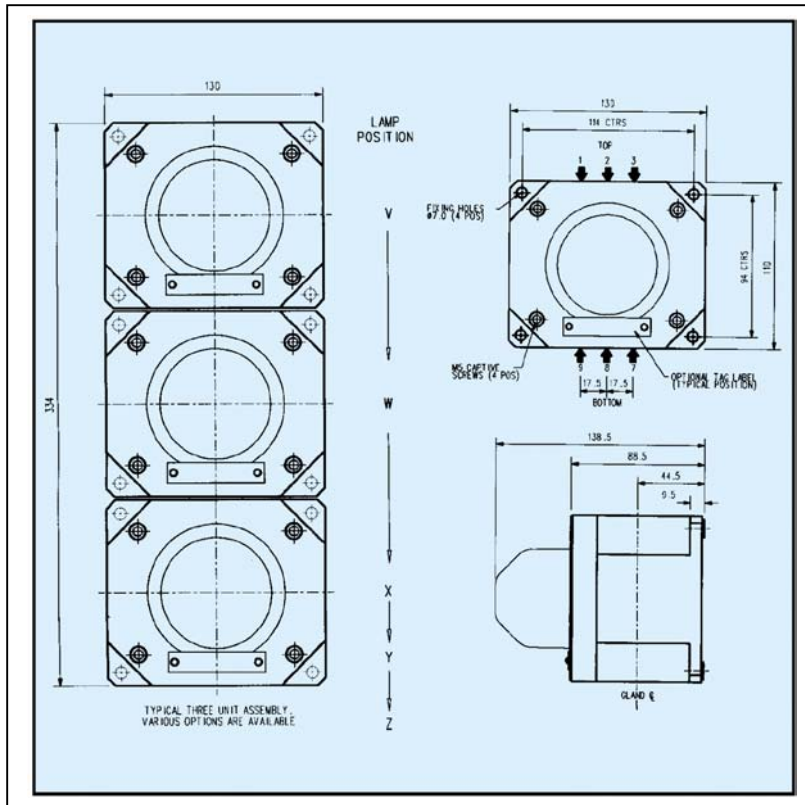
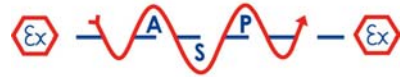


### Specification

Certification:	CENELEC EN50014, 19 & 28. Cert. No. BAS02ATEX210ATEX. EExem II T3/T4. Zones 1 & 2.																				
Material:	UV stable, glass reinforced polyester with polycarbonate wellglass. Captive stainless steel cover screws.																				
Finish:	Body natural black or painted to client specifications.																				
Weight:	1.2kg 1 way.																				
Certified Temperature:	-40°C to +55°C (Filament & Xenon). -40°C to +45°C (LED).																				
Ingress Protection:	IP66 and IP67.																				
Voltages:	d.c. – 12V, 24V, 48V. a.c. – 110V, 220V, 240V, 254V, 260V. Note: Xenon & LED versions only available in 24V and 48V.																				
Current Consumption:	<table border="1"> <thead> <tr> <th></th> <th>Voltage:</th> <th>24V</th> <th>48V</th> </tr> </thead> <tbody> <tr> <td>Xenon</td> <td>Current:</td> <td>120mA</td> <td>95mA</td> </tr> <tr> <td>LED</td> <td>Current:</td> <td>130-180mA</td> <td>70-90mA</td> </tr> </tbody> </table>				Voltage:	24V	48V	Xenon	Current:	120mA	95mA	LED	Current:	130-180mA	70-90mA						
	Voltage:	24V	48V																		
Xenon	Current:	120mA	95mA																		
LED	Current:	130-180mA	70-90mA																		
Light Module:	Up to 5 ways. Filament: 2 x 5W. Xenon: 1J (nominal). LED: Up to 400Cd.																				
Light Module Colours:	Filament & Xenon: Red, Amber, Yellow, Green, Blue or Clear. LED: Red, Amber, Green.																				
Terminals:	Filament: Max 12 x 4mm <sup>2</sup> . Xenon & LED: Max 16 x 2.5mm <sup>2</sup> .																				
Wiring:	Standard configuration of internal wiring is to common the negative/neutral connections. If individually wired lamps are required, please state.																				
Labels:	Optional stainless steel tag/duty label.																				
Entries:	<table border="1"> <thead> <tr> <th rowspan="2">Size</th> <th rowspan="2">Maximum Number</th> <th colspan="2">Entry Positions</th> </tr> <tr> <th>Top</th> <th>Bottom</th> </tr> </thead> <tbody> <tr> <td>M16</td> <td>2</td> <td>Any</td> <td>Any</td> </tr> <tr> <td>M20</td> <td>2</td> <td>Any</td> <td>Any</td> </tr> <tr> <td>M25/M32</td> <td>1</td> <td>2</td> <td>8</td> </tr> </tbody> </table>			Size	Maximum Number	Entry Positions		Top	Bottom	M16	2	Any	Any	M20	2	Any	Any	M25/M32	1	2	8
Size	Maximum Number	Entry Positions																			
		Top	Bottom																		
M16	2	Any	Any																		
M20	2	Any	Any																		
M25/M32	1	2	8																		

- Zone 1 and Zone 2 use.
  - EExe(m) II T3/T4.
  - ATEX approved, Ex II 2G.
  - CENELEC approved.
  - BASEEFA certified.
  - IP66 and IP67.
  - Certified temperature –40°C to +55°C
  - Corrosion resistant GRP.
  - Filament lamps (up to 5 pairs).
  - Xenon & LED versions available.
  - Various lamp colours.
  - Lightweight.
  - Retained stainless steel cover screws.
- \*Depending on version.





**Ordering Requirements**

The following code is designed to help in the selection of the correct unit. Build up the reference number by inserting the code for each component into the appropriate box.

Unit	Type	Lamp Type Positions					Voltage	Cable Entries	Duty/Tag Label	Finish				
SL5	<input type="text"/>	V	W	X	Y	Z	<input type="text"/>	<input type="text"/>	<input type="text"/>	<input type="text"/>				
Type	Code	Indicate light module type					*Voltage	Code	Entries	Code	Label	Code	Finish	Code
Uncertified	W	Filament	1	LED		3	12V d.c.	012	M16	*A	Tag	T*	Natural Black	N
EExe(m)	E	Xenon	2	LED Flashing		4	24V d.c.	024	M20	*B	None	N	Special	S*
		Suffixed by colour required*					48V d.c.	048	M25	*C	*Specify wording.		*Please specify	
		Lamp Colours					110V a.c.	110	M32	*D				
		Red		R			220V a.c.	220	*Prefix with cable entry position. (See diagram above) E.g. 7A, 9A.					
		Amber		A			240V a.c.	240						
		Yellow		Y			254V a.c.	254						
		Blue		B			260V a.c.	260						
		Green		G			*Note: Xenon and LED versions are only available in 24V and 48V d.c.							
		Clear		C										

EXAMPLE: A two way EExe certified unit, with filament lamps coloured red top, blue bottom, rated 240V, with 2 x M20 bottom entries, finished in red would be our ref: SL5EV1RW1B2407B9BNS.

**Supplied by:**

**A.S.P. Electro-Technology Ltd**  
Specialist Suppliers of Hazardous Area Certified  
Electrical Products & Instrumentation

39 London Road, Hinckley, LE10 1HQ. U.K.  
Tel: +44 (0)1455 635796 Fax: +44 (0)1455 251110  
Email: [sales@asp-electro-tech.com](mailto:sales@asp-electro-tech.com) Web: [asp-electro-tech.com](http://asp-electro-tech.com)



This publication is not intended to form the basis of a contract. All the above specifications, dimensions, weights, tolerances etc are typical and may be varied or changed by the manufacturer without prior notice. A.S.P. Electro-Technology accept no liability for consequence of use.