

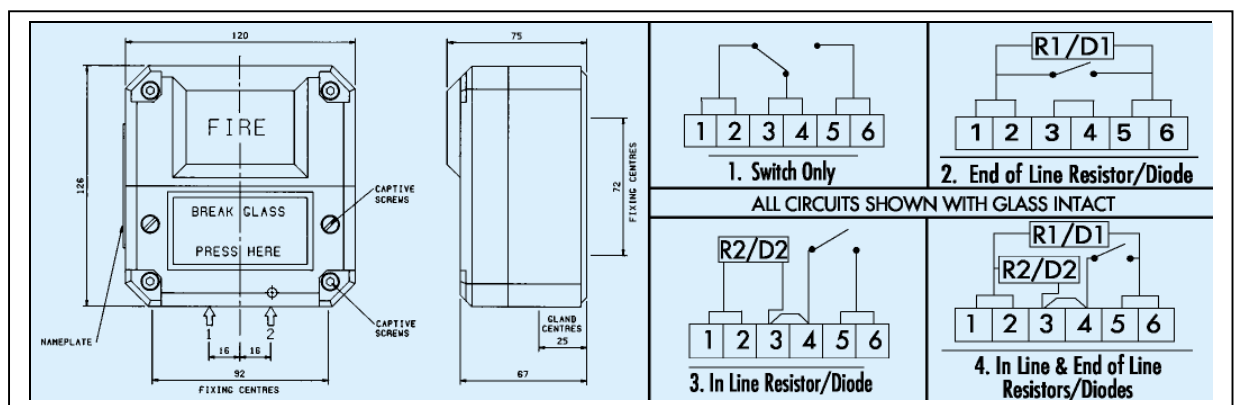
Manual Call Point - BG2 Range
EExed, Intrinsically Safe (EExia, Weatherproof.



Introduction

This manual fire alarm call point has been designed for use in flammable atmospheres and harsh environmental conditions. The GRP enclosure is suitable for use offshore or onshore where light weight combined with a high level of corrosion resistance is required.

- Zone 0, Zone 1 and Zone 2 use
- EExed, EExia or weatherproof
- ATEX approved – Ex II 1 G (EExia) / Ex II 2G (EExed)
- IP66 and IP67.
- CENELEC approved
- BASEEFA certified.
- Corrosion resistant red GRP.
- Retained stainless steel cover screws.
- Optional lift flap.
- Key operated test facility.
- Lightweight and robust.
- Breakglass hammer available





MODEL	BG2W	BG2E	BG2I
PROTECTION	Dust-tight and Weatherproof	Explosion Protected EExed (Increased Safety)	Explosion Protected EExia (Intrinsically Safe)
CERTIFICATION	Not Applicable	CENELEC EN50014, 018, 019, 028 Cert. No. BAS02ATEX2105X EExedIICT6 (switch only) EExedmIICT4 (other versions) Suitable for use in Zones 1 & 2	CENELEC EN50014, 020 Cert. No. Baseefa03ATEX0084X EExia IIC T4 Suitable for use in Zones 0, 1 & 2
VOLTAGE	Up to 254V	Up to 250V (Switch only) Up to 24V (Resistors & Switch)	Up to 28V (IS)
CERTIFIED TEMPERATURE	-40C to +55C	-20C to +50C	-40C to +55C
INGRESS PROTECTION	IP66 & 67.		
BRITISH STANDARD FOR CALL POINTS	BS 5839 : Part 2 : 1983 (BG).		
TERMINALS	6 x 2.5mm ² .		
SWITCH RATINGS	DC: 0-30V 5A (resistive) or 3A (inductive) 30V-50V 1 A resistive or inductive AC: 0-254V 5A resistive or inductive		NOT APPLICABLE
RESISTOR VALUES	270R Minimum	470R Minimum, 39k Maximum	470R Minimum
CABLE ENTRIES	2 x M20 bottom.		
WEIGHT	1.2 Kg.		
MATERIAL	U.V. resistant glass reinforced polyester.		
FINISH	Self coloured red. Note: Natural red GRP may fade with exposure to sunlight. Specify painted finish if unit to be used outdoors		

Ordering Requirements

The following code is designed to help in the selection of the correct unit. Build up the reference number by inserting the code for each component into the appropriate box. **For standard products, available ex-stock, contact sales office for details**

This Range of Manual Alarm Call Points caters for numerous options such as variety of colours, LED indication, earth continuity, double switch, etc. See separate catalogue sheet for details.

Model/Voltage	Code
BG2W – AC or DC	BG2WNN
BG2I – Up to 28V (I.S.)	BG2INN
BG2E – DC	BG2EDC
BG2E – AC	BG2EAC

Wiring Diagram (as above)	Code
Switch only	1
End of line resistor	2*
In line resistor	3*
In line and end of line resistor	4*
Diode (specify location & value)	5

*(Specify resistor values)

Lift Flap	Code
Fitted	F
Not Fitted	N

Finish	Code
Natural Red*	N
Red Painted	R

Note: Natural red GRP may fade with exposure to sunlight. Specify painted finish if unit to be used outdoors.

Supplied by:

A.S.P. Electro-Technology Ltd
Specialist Suppliers of Hazardous Area Certified
Electrical Products & Instrumentation

39 London Road, Hinckley, LE10 1HQ. U.K.
Tel: +44 (0)1455 635796 Fax: +44 (0)1455 251110
Email: sales@asp-electro-tech.com Web: asp-electro-tech.com



This publication is not intended to form the basis of a contract. All the above specifications, dimensions, weights, tolerances etc are typical and may be varied or changed by the manufacturer without prior notice. A.S.P. Electro-Technology accept no liability for consequence of use.