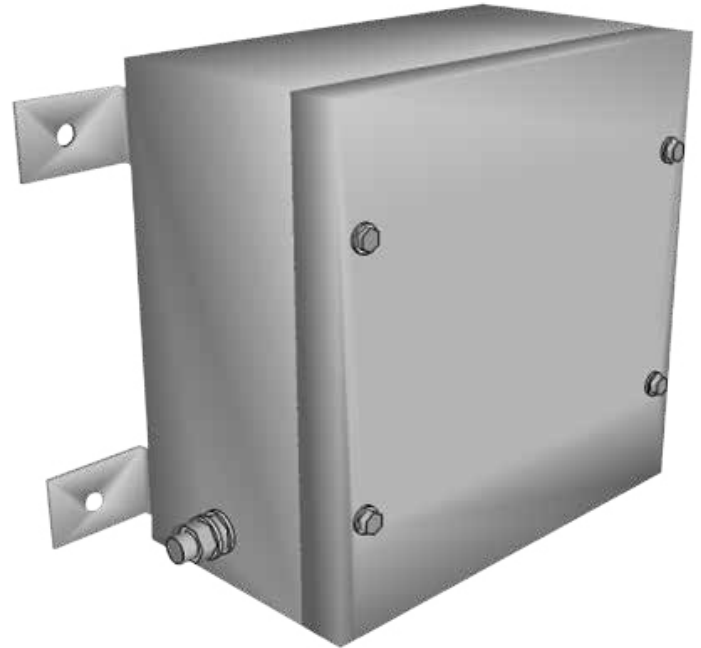


iSTB Enclosure Range

Our standard iSTB enclosure range gives you the most modern, robust and cost effective solution for hazardous and heavy industrial use.

Key Features

- Any size up to 600x600x300mm for hazardous area
 - Any size for industrial use
 - 316L, 304 Stainless and painted Mild Steel
 - ATEX
 - Silicon gaskets as standard
 - Brushed finish as standard, other options available
 - 316L is Corrosion resistant for min 25 years
 - Impact resistant 7 NM
 - All fixtures and fittings in 316L Stainless Steel
 - Innovative mounting assembly options
 - Din rail supports fitted
 - Various material thicknesses available on request
-
- Flexible external mounting solutions
 - Gland plates optional
 - High performance gasket
 - Industrial and hazard area solutions
 - Label options available
 - Optional locking solutions
 - Range of finishes and materials



Technical Data

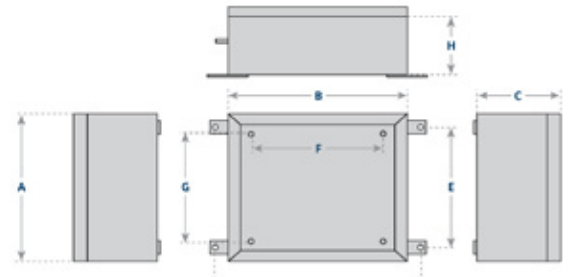
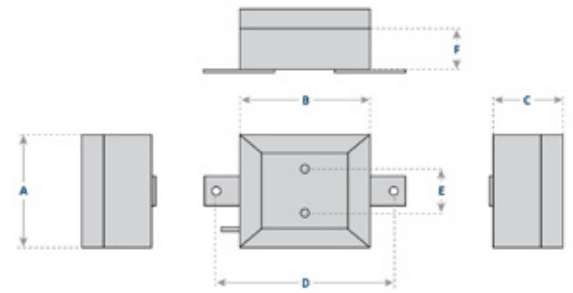
- Construction Material
316L (1.4404), 304 (1.4301) Stainless Steel Mild Steel (CR4)
- Material Thickness (mm)
Body: 1.2/1.5mm Lid: 1.2/1.5mm Other thicknesses available
- Standard Finish
Stainless Steel - brushed
Mild Steel - Powder Coated Grey RAL7032 or RAL7035
- Optional Finish
Stainless Steel - natural, pickled or electropolished
Mild Steel - customer specific colours and specification
- Door Fixing
Bolt down (Stainless Steel bolts)
- Sealing Material
High performance silicone seal
- Enclosure Earth
M6 internal and external Stainless Steel earth stud assembly. Painted enclosures have M6 internal stud on door and painted gland plates
- Cable Entries
Direct through body (or via gland plates- option)
- Enclosure Mounting
Bolt directly to equipment or via 2 mounting lugs. These are bolted on as standard but may be welded as an option. Other options available

Standard Dimensions

All dimensions in mm

Box Size	A	B	C	D	E	F			Lid Gauge	Body Gauge	Bolts
iSTB101008	100	100	80	160	35	55			1.2	1.2	4
iSTB121209	120	120	90	180	50	65			1.2	1.2	4
iSTB151509	150	150	90	210	50	65			1.2	1.2	4

Box Size	A	B	C	D	E	F	G	H	Lid Gauge	Body Gauge	Bolts
iSTB191910	190	190	100	250	120	90	90	75	1.2	1.2	4
iSTB163812	160	380	120	440	90	280	60	95	1.2	1.2	4
iSTB252512	250	250	120	310	180	150	150	95	1.2	1.2	4
iSTB254015	250	400	150	460	180	300	150	125	1.5	1.5	4
iSTB383820	380	380	200	440	310	280	280	175	1.5	1.5	4
iSTB604020	600	600	200	460	530	300	500	175	1.5	1.5	4
iSTB606030	600	600	300	660	530	500	500	275	1.5	1.5	4



Certificates

Component (ATEX)

Certificate No.	SIRA11ATEX3142U
Service Temperature Range	-40° C to +135° C
Ingress Protection	IP66
Impact Resistance	7J NM

Apparatus (ATEX)

Certificate No.	SIRA11ATEX3241X
Marking	II 2 GD
Protection Concepts	GAS: Ex e IIC Gb T6, T5, T4 DUST: Ex tb IIIC Db IP66
Ambient Temperature	Min -50° C Max +70° C

Part Number Selection Example

Order code:

iSTB	S1	19	19	10	2	AC
Family	Material	Height	Width	Depth	No. of Gland Plates	Gland Plate Faces
iSTB	S1	19	19	10	2	AC
<i>iSTB</i>	<i>316L</i>	<i>190mm</i>	<i>190mm</i>	<i>100mm</i>	<i>2</i>	<i>Top & Bottom</i>
S1 = 316L S2 = 304 PS = Mild Steel					0,1,2,3 or 4	A = Top B = Right C = Bottom D = Left

For custom sizes use: IELSO... number. Given on indEx quotations.